

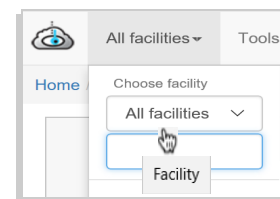
TSI manual

TSI (TermoSense® Internet) is the application that gives you own web pages with full overview of your facility, both in the present and in the past. TSI shows among other things:

- Current overview, including alarms
- Alarm reports
- Transmitter activities
- History and comparison chart
- Export function to Excel
- Documentation

Start

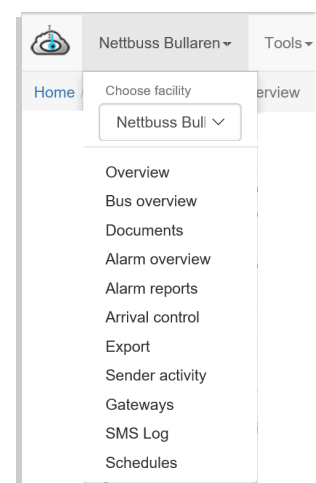
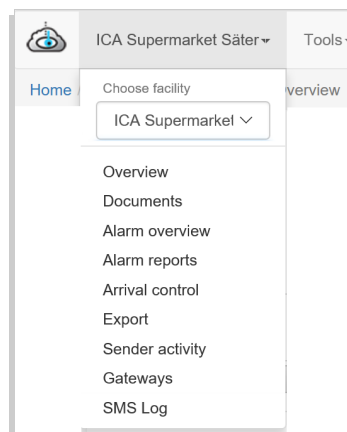
- Log in to the TSI via the SensiNet website www.sensinet.se (menu selection TSI) or with the direct link tsi.termosense.com.
- Choose facility.



A dropdown menu appears with the choices you can make.

Bus facilities have a menu with two additional choices:

- Bus overview and
- Scheduling.



Menu selection

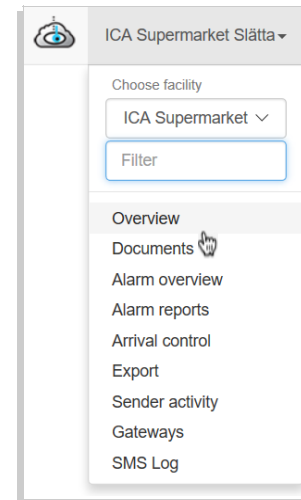
- **Overview**
Shows schematically all units included in the facility, as well as their current status.
The overview is explained in more detail on the following pages in this document.
- **Bus overview** (only bus facilities)
Lists all the bus company's buses that are at one of the company facilities' depots : bus individual, bus status, facility and ramp location.
- **Document**
Downloadable documents that are relevant to the facility.
- **Alarm overview**
Lists unacknowledged alarms in a sortable table. Each entry contains alarm device, its ID, transmitter type, duration, alarm mode (active, reset, unacknowledged).
- **Alarm reports**
Report with records on all alarms with the latest first. Each item contains time, alarm unit, its ID, transmitter type, alarm mode and possibly additional values.
- **Arrival check**
Tables with temperature measurements of foodstuff during in and outbound delivery. Entries are directly and wirelessly stored in a table corresponding to the respective supplier.
- **Export**
To export selected parts from TSI to Excel.
- **Transmitting activity**
Displays all transmitter activity throughout the facility for any day, as well as a statistical summary of how the communication has progressed.
- **Gateways**
Displays general information and status of the facility: Overview with system status, technical information on gateway, summary of report activities, network information.
- **SMS log**
A filterable chronological log with all SMS sent to different phone numbers.
- **Scheduling** (bus facilities only)
Scheduling of heating for depot-deployed buses within a facility.

TSI Overview

The overview gives you a general summary of the facility, ability to maintain the right temperature, moisture, and more. You also have access to statistics and alarm functions.

To view the overview of the plant:

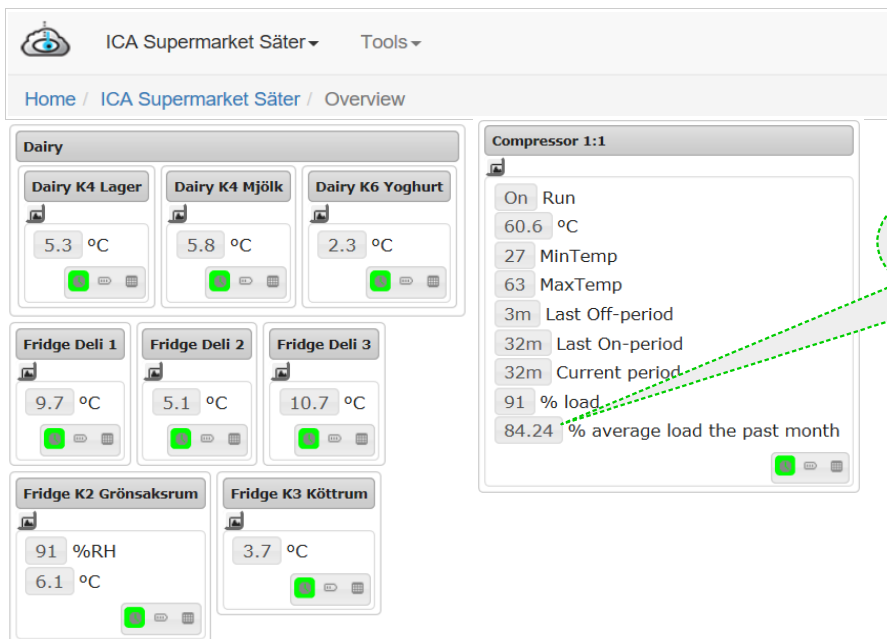
- Log in to the TSI (TermoSense® Internet)
- Select facility
- Then select overview



TSI Overview - Logical Layout

In the overview of the installation, you will see all the existing TermoSense® wireless sensor units in a logically grouped layout.

Here is an example of a grocery store overview:

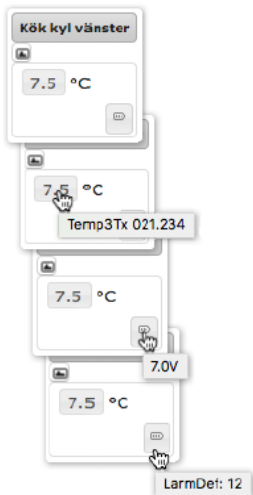


Good for energy savings management

A layout can also be grouped in other ways, such as in a form of a hall or building in which the sensors are located.

TSI Overview - Sensor Status

Below are different status of a sensor that can be displayed. Keeping the mouse pointer over different symbols provide even more information. A click on the chart symbol provides statistics for a sensor.

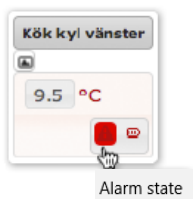


Normal state - everything is ok

The box shows the sensor's name, a chart symbol, the sensor's measurement value, and a battery symbol.

Labels displayed depending on mouse pointer location:

- At the measurement value, sensor type and unique identity (RF ID) are displayed.
- The battery symbol shows the current battery voltage.
- At the bottom of the battery symbol, the sensor's alarm definition-affiliation.



Alarm

The sensor then alerts the alarm criterion according to the corresponding alarm definition satisfied, for example, high temperature for a defined period of time.

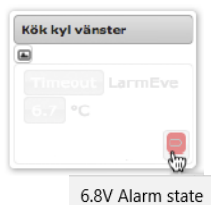
- Fix the cause of the alarm.



Normalization of an Alarm - waiting for receipt

The sensor is back in normal state after previous alarms.

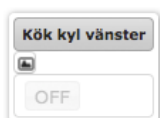
- Confirm the alarm at base station or alarm receiver.
- Follow up with a check of the sensor's diagram.



Alarm mode - switch lost due to low battery voltage

Mouse pointer over the battery symbol shows the last registered battery voltage.

- Send sensor to SensiNet AB for battery replacement.


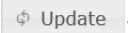


The sensor is turned off

It is installed as a device in the facility, but sensor has lost contact.

To activate simply use the touch-free activation key.

TSI Overview - Diagram

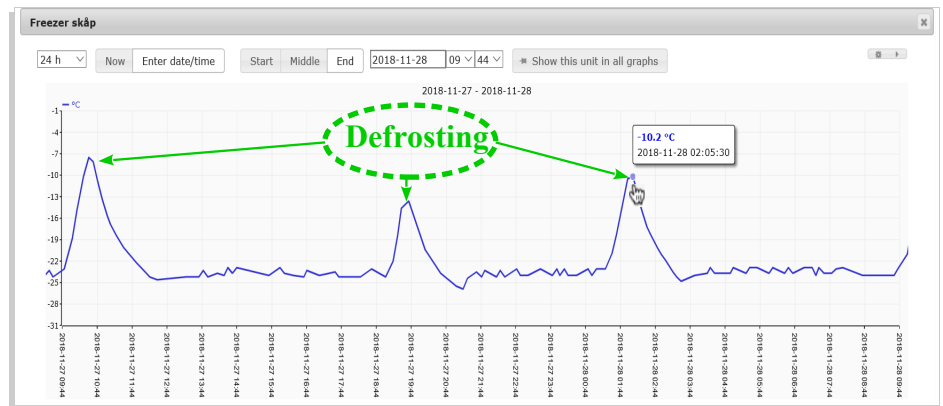
A click on the sensor's diagram symbol  provides a chart showing the sensor's current and historical metrics, providing statistics and trends to help you prevent costly failures. The desired time of the chart is chosen from a calendar and the time span ranges from 60 minutes to 4 weeks. Confirm selection with the button .

Curves between different charts can be combined graphically to prove connection.

To do so use the button .

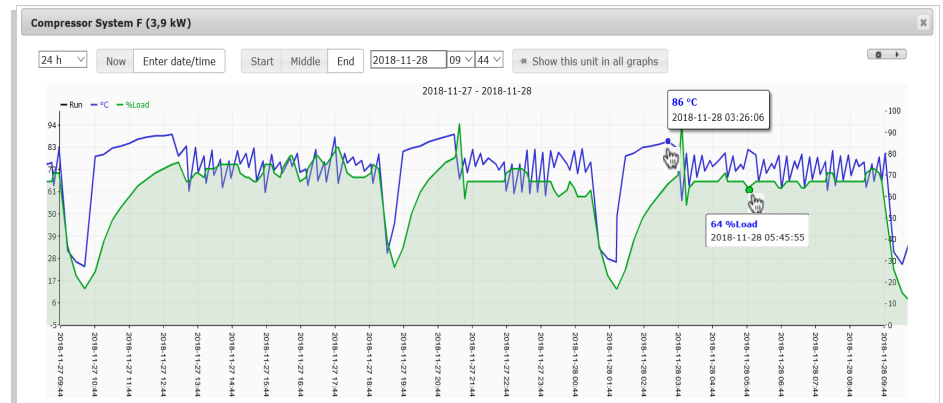
Example 1

Shows temperature in a freezer which is defrosted three times per displayed date. The diagram's time span is 24 hours.



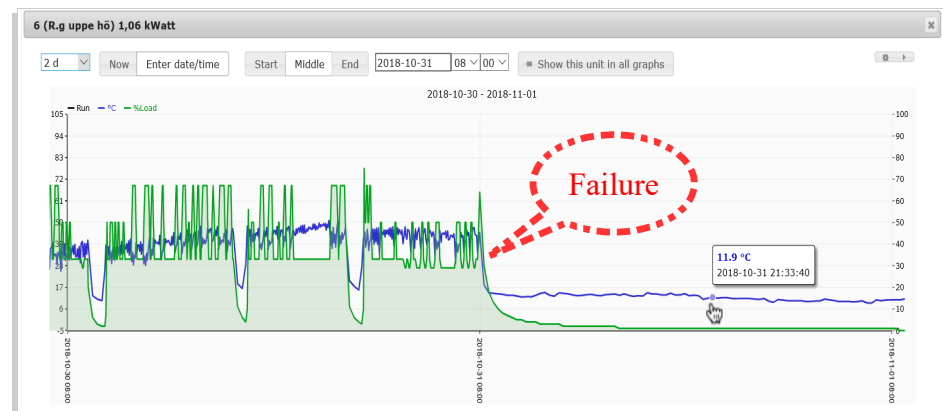
Example 2

Shows the values from compressor of a given fridge. The curves show both working temperature and loading of the compressor from which its normal operation mode can be monitored.

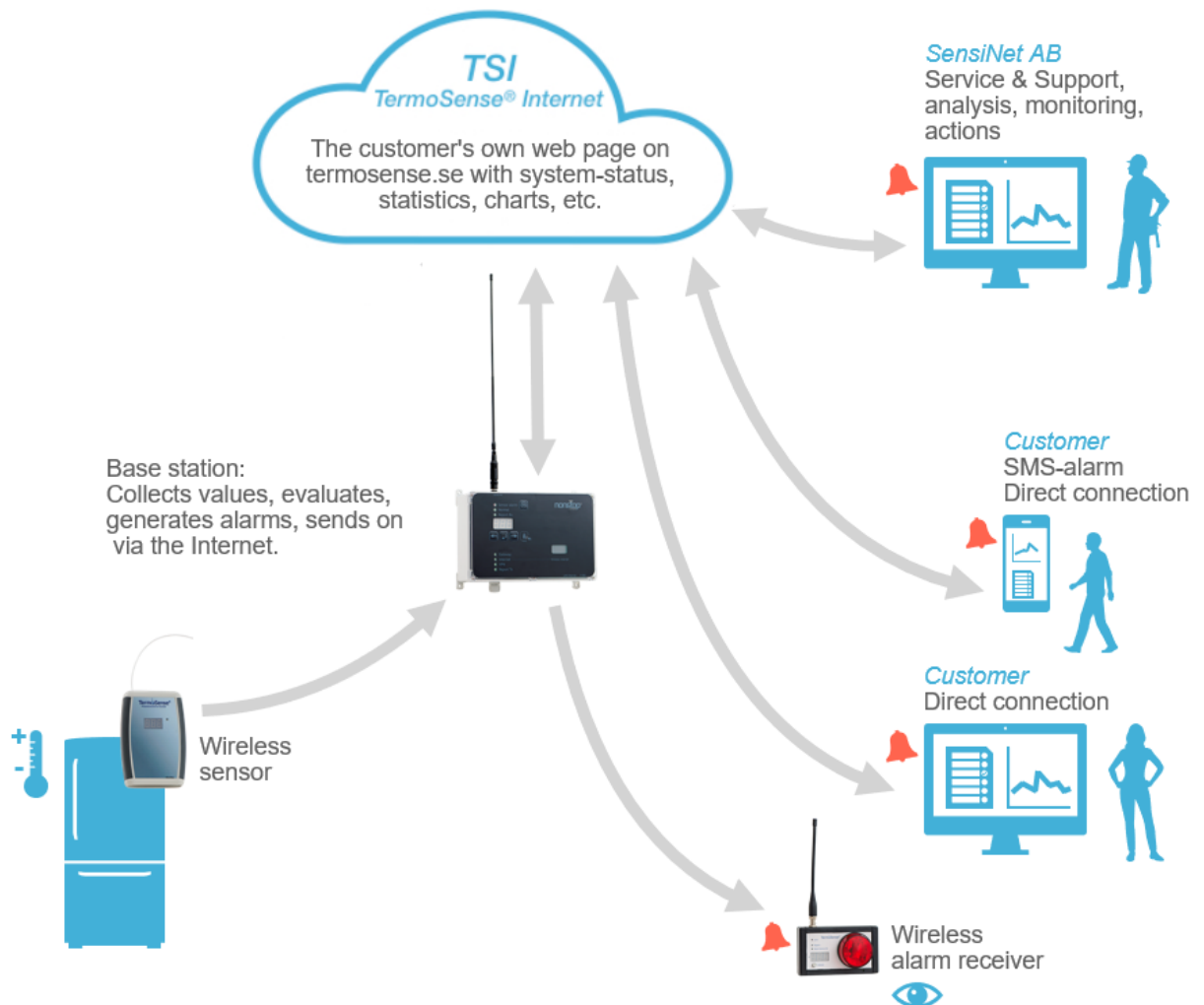


Example 3

Diagram showing a compressor's failure. The diagram's time span has been adjusted around the time of failure.



TermoSense® General system principle



v1.2

SensiNet

The right to technical modifications reserved © 2019 SensiNet AB

v 1.03

SensiNet AB
Mårtensgård 39
SE - 783 90 Säter

Tel: +46 225-535 70
Mob: +46 70-733 64 62
Fax: +46 225-535 72
Mail: info@sensinet.se

Orgnr: 556810-7568
www.sensinet.se
www.termosense.se
www.radiosensorer.se